

PHILIPS

SpeechMike

Premium Touch

Dictation microphone

Touch sensor

USB

Precision microphone

Integrated barcode scanner



SMP3700/3800 series



Best-in-class recording

with Precision Microphone

SpeechMike Premium Touch is the latest innovation from Philips. It comes with a premium decoupled studio quality microphone, a built-in noise reduction filter, antimicrobial housing and a motion sensor for the clearest speech recordings and most accurate speech recognition results. The new touch sensor ensures easier navigation, saving you even more time.

Tuned for clarity

- Decoupled studio-quality microphone for precise recording
- Microphone grille with optimized structure for crystal clear sound
- Integrated pop filter for perfect recording quality
- Large speaker area for premium playback

Crafted for comfort

- Ergonomically shaped for perfect fit in the hand
- Wear-free slide switch or push buttons for comfortable operation
- Integrated motion sensor mutes microphone when not in use
- Touch sensor for integrated mouse function

Designed for detail

- Antimicrobial housing and buttons for hygienic working
- Barcode scanner for streamlined documentation
- Freely configurable function keys for a personalized workflow
- Smart, backwards compatible firmware for extra flexibility



No 1 in SPS global customer satisfaction survey 09/2015.

Highlights

Free-floating studio-quality microphone



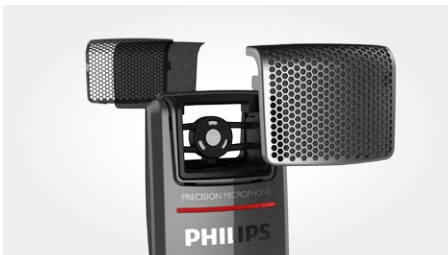
The free-floating microphone is decoupled from the device's housing, which guarantees that almost no background, touch, click, air or structure-borne noise is recorded. This technique is derived from studio microphones to make sure there are no sound distortions whatsoever and to guarantee outstanding speech recognition results.

Metal microphone grille



The metal grille comes with specially designed hexagonal openings which allow three times more sound to reach the microphone than its predecessor, engineered to provide crystal clear recordings.

Integrated pop filter



Fleece inserted above and below the microphone capsule filters out sound distortions such as pop and hiss noise, guaranteeing perfect results even if dictating closely into the microphone.

Large speaker area



The SpeechMike Premium Touch is equipped with an extra-large speaker, enabling it to not only record but also play back recordings in clear and crisp quality.

Ergonomically shaped



The device is designed to fit perfectly into the hand and reduce unintentional pressing of buttons. The trigger and the 'command' button on the back of the device are engineered to be in easy reach for the fingers.

Wear-free slide switch and push button



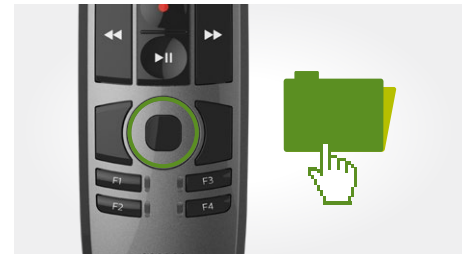
The SpeechMike Premium Touch comes with a slide-switch or a push-button operation. The slide switch is wear-free and ergonomically shaped with a softly ribbed surface for smooth tactile feedback and comfortable and intuitive utilization. In addition, our engineers implemented a millionfold proven contactless slider detection, making it completely wear-free for an extra-long lifetime.

Integrated motion sensor



Being on the cutting edge of technology, the SpeechMike Premium Touch comes with an integrated motion sensor, making it the first stationary dictation device that can be controlled by the movement of your hand. It detects when it's put on the table, mutes the microphone, and once it is being picked up again it unmutes the microphone. In addition to that, custom events can be programmed, e.g., to pause and to continue the recording.

Touch sensor



The device comes with a touch sensor. This allows the user to easily control and navigate within applications while recording, without having to switch between the mouse and microphone.

Highlights

Polished, antimicrobial housing



The housing and the buttons of the SpeechMike Premium Touch are made of antimicrobial synthetics that work against a wide range of different microorganisms such as bacteria (e.g. pneumococcal bacilli and multiresistant microorganisms such as MRSA), viruses (e.g. HIV, influenza, etc.), fungi (e.g. Aspergillus niger), or algae. The polished, high quality pearl metal surface also makes the device non-sensitive to touch noises and fingerprints.

Integrated barcode scanner



The SpeechMike Premium Touch is also available with an integrated barcode scanner to link client or patient data to a recorded file simply by scanning a barcode. The scanned information is automatically attached to the dictation file, streamlining the documentation process. All identifying information is entered accurately, increasing security and potential for cost savings.

Freely configurable keys



The SpeechMike Premium Touch has freely configurable keys which are especially useful for programming speech recognition commands. The device can be personalized for any user and application.

Highly compatible



Customers can upgrade from their previous SpeechMike model without installing additional software. For integrators, this means no changes need to be implemented and the existing SDK can be used. The SpeechMike Premium Touch is compatible with Mac and Windows operating systems, as well as virtual environments such as Citrix, VM Ware and Hyper-V. It can be configured using SpeechControl, the convenient Philips hardware management tool.

SMP3720



Slide-switch operation (fast forward, record/play, stop, fast rewind)

SMP3800



Push-button operation
Integrated barcode scanner

Versions

SMP3700



Push-button operation

SMP3810



Slide-switch operation (record, stop, play, fast rewind)
Integrated barcode scanner

SMP3710



Slide-switch operation (record, stop, play, fast rewind)

PSE3700



Push-button operation
SpeechExec Pro dictation and speech recognition software

Specifications

Connectivity

USB: USB 2.0, type A (compatible with USB 3.0)

Audio recording

Microphone type: electret condenser microphone

Microphone capsule: 10 mm

Characteristic: uni-directional

Frequency response: 200 – 12 000 Hz

Sensitivity: -37 dBV

Signal-to-noise ratio: > 70 dBA

Sound

Speaker type: built-in round, dynamic speaker

Speaker diameter: 30 mm

Acoustic frequency response: 300 – 7500 Hz

Speaker output power: > 200 mW

Barcode scanner (SMP3800/3810)

Compatible bar codes: EAN, UPC, Code 11 / 39 / 93 / 128, Codabar, MSI Code, Interleaved 2 of 5, Discrete 2 of 5, Chinese 2 of 5, Matrix 2 of 5, Inverse 1D, GS1 DataBar

Type: charge-coupled device (CCD)

System requirements for Philips

SpeechControl software

Processor: Intel dual core or equivalent AMD processor, 1 GHz or faster processor

RAM: 2 GB (32 bit)/4 GB (64 bit)

Hard-disk space: 30 MB for SpeechControl software, 4.5 GB for Microsoft .NET Framework

Operating system: Windows 10 (64 bit), Windows 8.1/7 (32/64 bit), Windows Server 2012 (64 bit), Windows Server 2008 R2 (32/64 bit), macOS 10.11/10.12

Graphics: DirectX-compliant graphics card with hardware acceleration recommended

Sound: Windows-compatible sound device

Free USB port

Supported speech recognition software:

Nuance Dragon Professional 12.5/13/14/15

Individual/Group, Nuance Dragon Legal

12.5/13/14/15, Dragon Medical Practice Edition

2/3, Nuance Dragon SDK Client Edition 14,

M*Modal Fluency Direct 8.0 and above

Green specifications

Compliant to 2011/65/EU (RoHS)

Lead-free soldered product

Operation conditions

Temperature: 5° – 45° C / 41° – 113° F

Humidity: 10 % – 90 %

Dimensions

Product dimensions (W × D × H):

45 × 175 × 32 mm / 1.8 × 6.9 × 1.25 in

Weight: 200g / 7 oz (including cable)

Cable length: 2.5 m / 8.2 ft

Design and finishing

Material: housing made of high-class polymers with antimicrobial additive

Color: dark grey pearl metallic,

Package contents

SpeechMike Premium Touch dictation microphone

USB cable (connected to device)

Microphone holder

Quick start guide

